

Made for Motion



EFFICIENT. POWERFUL. RELIABLE.

Solutions for General Power Transmission in Mechanical Engineering

- Drive Technology
- Brake Systems
- Hydraulic Components
- Cooling Systems

Perfect connection in general power transmission – Our drive components.



ROTEX® Torsionally flexible jaw coupling

- Jaw coupling for power transmission damping torsional vibrations
- For torques up to 35,000 Nm
- Axial plug-in, easy assembly, maintenance-free
- Standard spiders made of high temperature-resistant T-PUR
- Operating range of T-PUR from – 50 °C to + 120 °C, temperature peaks up to 150 °C
- DIN and SAE splines
- Inch and taper bores



POLY-NORM® ADR-SBA Torsionally-flexible, shear type shaft coupling

- For torques up to 40 to 67,000 Nm
- With brake disk for holding brake
- Elastomer spider can be replaced while being assembled
- Axial plug-in, easy assembly
- Maintenance-free
- Short dimensions, small shaft distance dimension



REVOLEX® KX-D Torsionally flexible, fail-safe pin & bush coupling

- For torques from 3,800 to 1,220,000 Nm
- Maintenance-free
- Pins can be radially assembled/disassembled
- All-over machining, good dynamic properties
- Hub material steel for higher loads and speeds



ROTEX® SD Shiftable jaw coupling

- Easy separation resp. engagement of driving and driven machines with standstill of the plant
- Current shifting hub can be combined with slip ring and shiftable linkage
- After final machining the pilot bored shifting hubs must be set to the necessary shifting force
- Complete shifting device consists of slip ring made of red brass, shifting fork, shifting shaft, shifting lever, eye type bearing



TOOLFLEX® | RADEX®-NC

- TOOLFLEX®** | Metal bellow-type coupling
- Backlash-free, torsionally stiff metal bellow-type coupling
 - For torques from 0.1 to 600 Nm
 - Ambient temperatures up to 200 °C possible (depending on size)







- RADEX-NC®** | servo lamina coupling
- Backlash-free, torsionally stiff servo lamina coupling
 - For torques from 2.5 to 300 Nm
 - Ambient temperatures up to + 200 °C possible



ROTEX® GS | ROTEX® GS ZR

- ROTEX® GS** | Backlash-free coupling
- Backlash-free jaw coupling damping vibrations
 - For torques from 0.2 to 5,850 Nm

- ROTEX® GS ZR** | Intermediate shaft coupling
- For bridging large shaft distances
 - Good damping properties due to double arrangement of spiders
 - Intermediate pipe mounted flexibly in the GS spider can be disassembled radially

Products						
Applications	ROTEX®	POLY-NORM® ADR-SBA	Revolex® KX-D	ROTEX® -SD	TOOLFLEX® RADEX® -NC	ROTEX® GS ROTEX® GS ZR
Industrial gear units	■	■	■	■		
Gear motors	■				■	■
Planetary gears					■	■
Production industry	■	■	■	■	■	■
Steel mill manufacturers	■	■	■	■		
Paper machines	■				■	■
Trade	■	■	■	■	■	■
Plastics machines	■				■	■
Machine tools	■				■	■
Printing machines	■				■	■



BoWex® Curved-tooth gear coupling

- Double-cardanic curved-tooth gear coupling
- For torques from 5 to 2,500 Nm
- For all applications in mechanical engineering and hydraulics
- With sleeve made of carbon fibre reinforced polyamide
- No electrostatic charging of nylon sleeves
- Design generates protection against frictional and impact sparking



BoWex® HEW Compact Curved-tooth gear coupling

- Highly flexible shaft coupling
- For torques from 200 to 8,400 Nm
- Mainly used in variable-speed drives
- High potential of compensating for misalignment
- Very compact design, axial plug-in
- Low restoring forces
- Available in different kinds of Shore hardness



RADEX®-N Steel lamina coupling

- Backlash-free, torsionally stiff and maintenance-free steel lamina coupling
- For rated torque up to 280,000 Nm
- Free from wear, big displacement figures
- Operating range up to 280 °C
- Single- and double-cardanic types



GEARex® All-steel gear coupling

- Double-cardanic all-steel gear coupling
- For torques up to 2,750,000 Nm
- Operating range from – 20 °C to + 80 °C
- High performance density, short dimensions
- According to AGMA standard 9008-B00

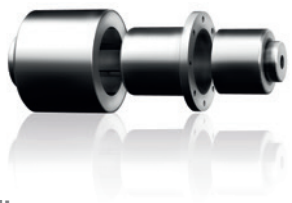


							
BoWex®	BoWex® HEW Compact	RADEX®-N	GEARex®	CLAMPEX®	MINEX®-S	RUFLEX®	ALF K-S-AR
■	■	■	■	■		■	■
■	■	■	■	■		■	■
■	■	■	■	■	■	■	■
■	■	■	■	■		■	■
■	■	■	■	■		■	■
■	■	■	■	■	■	■	■
■	■	■	■	■	■	■	■
■	■	■	■	■		■	■
■	■	■	■	■		■	■



CLAMPEX®
Clamping elements

- Self-centering clamping set
- No additional centering of hub required
- Axial displacement of hub during assembly of clamping set
- Axially shiftable hub necessary to meet the catalogue data



MINEX®-S
Magnet couplings

- Contactless torque transmission with permanent magnets
- For torques from 0.15 to 1,000 Nm
- Hermetic sealing of medium
- Resistant to aggressive media
- Optionally acc. to API 685
- Frequent use in vacuum and fluid pumps



RUFLEX®
Torque limiter

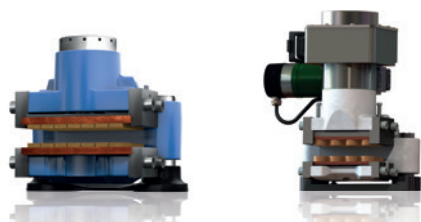
- Torque limiter with high power density by high-quality materials
- Overload protection up to 12,000 Nm
- Large wear volume for a long service life
- Surface protection by zinc-plating and yellow phosphating
- Easy setting of slipping torque with standard tools



ALF K-S-AR
Fluid coupling

- Smooth starting of machines (e. g. conveyors)
- No oversizing of motors with acceleration of large masses
- Protection of machines (driving and driven side) with blockage or overload

Other components – for general power transmission.



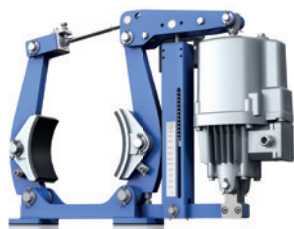
KTR-STOP® | EMB-STOP

KTR-STOP® | Hydraulic floating caliper brake

- Clamping forces up to 1,400 kN
- Short reaction times subject to the small distance between brake pad and brake disk and low oil volume

EMB-STOP | Electromechanical floating caliper brake

- Clamping forces up to 1,600 kN
- Electromechanical brake
- "Plug 'n Play" – maintenance-free



KTR-STOP® TB T Drum brake

- Version as per DIN 15435
- Fully closed spiral element rising protection against damage and dirt
- Braking torque to be set
- Pins and pull rod/spring pull rod made of stainless steel
- Also available as a disk brake version



Hydraulic components

- The use of bellhousings allows for perfect adaptation of motor and pump shafts to each other
- Material: cast iron – for offshore applications
- Horizontal assembly in combination with KTR foot flanges available
- Programme for selection of online campaigns: see www.ktr.com



BoWex® FLE-PAC | Pump mounting flange

BoWex® FLE-PAC | Flange coupling

- High-quality, torsionally rigid curved-tooth flange coupling
- For torques from 240 to 6,600 Nm
- For mounting a flywheel to I.C.-engines and hydraulic pumps
- Maintenance-free by material combination nylon/steel

Pump mounting flange

- For mounting hydraulic pumps to a diesel engine
- Pump connection housing made of EN-GJL-250 (GG25) for direct mounting to the back plate of the engine



DATAFLEX® Torque measuring shafts

- Reliable measurement values in machine monitoring, process control and test bench technology
- Measuring ranges: 10 Nm to 20,000 Nm
- Measuring inaccuracy < 0.1 % of the final value
- Double channel speed measurement with 720 pulses/revolution
- Additional speed DC voltage output



Oil/air cooler OAC

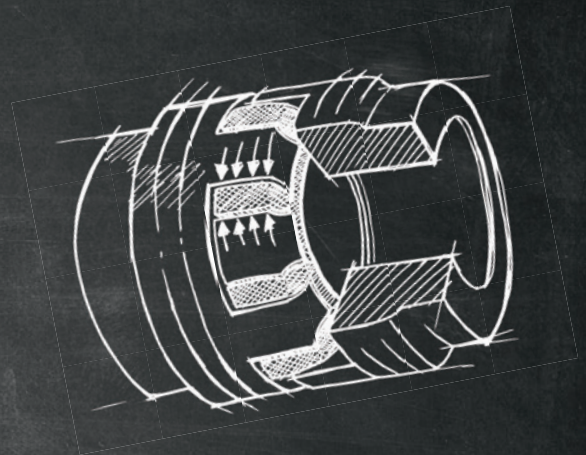
- High-performance coolers for a maximum static operating pressure of 26 bar made of aluminium
- Suitable for hydraulic oil, gear oil, lubricating oil, motor oil and water-glycol
- Fan drive available as 12V, 24V and hydraulic drive
- Easy to maintain and good options of cleaning
- Low sound pressure level

**Faster to the destination –
with our new online tools.**



**During the final stages of planning
time is often running out.**

Our new online tools facilitate your finish: by means of filtering and comparison functions as well as clear technical data from lively 3D models and linking with the [online shop](#).



otools.ktr.com

Headquarters

KTR Systems GmbH

Carl-Zeiss-Str. 25

D - 48432 Rheine

Phone: +49 5971 798-0

Fax: +49 5971 798-698 or 798-450

E-Mail: mail@ktr.com

For you on site throughout the world: ktr.com > [contact](#)

Made for Motion

